

## Technical Session Summary

### Friday: 10:00-11:30 – 1.5 CPD Hours

#### Bicycle & Pedestrian Design

##### Urban Trail Construction

Douglas Blank, PE – Michael Baker International  
Sean McDermott, PE – Chief Planning and Design Officer, Cleveland Metroparks

##### Bicycle Turn Boxes

John J. Gallagher, MS, PE, PTOE – Carpenter Marty Transportation, Inc.  
Drew Laurent – Carpenter Marty Transportation, Inc.

##### Cleveland Public Square

Scott A. Vura, PE, LEED AP – Osborn Engineering  
Joseph Ferenczy, PE – Osborn Engineering

#### Structures

Anthony Wayne Bridge- Suspension Bridge Dehumidification and Dynamic Lighting System  
Edward J. Adamczyk, PE – Arcadis U.S. Inc.  
David Lynch – AECOM Technical Services, Inc. - Dehumidification

Interstate 78 Under Clearance Bridge Project, Phases 1 & 2  
Gerald L. Fry, PE – Johnson, Mirmiran and Thompson  
George Horas, PE – Alfred Benesch and Company  
Brian Brawand, PE – Alfred Benesch and Company

##### Accelerated Bridge Construction

Mark J. Pavlick, PE – HDR Engineering, Inc.  
Jason Bono, PE – HDR Engineering, Inc.  
Steven Dale, P.E. - Pennsylvania Turnpike Commission

#### Asset Management

GIS Management  
Jason Hoff – HNTB Corporation  
Mitch House – HNTB Corporation

Proactive Pavement Maintenance and Rehabilitation  
Dominic Passanita, PE – Stahl Sheaffer Engineering, LLC

Implementation of Ohio a Transportation Asset Management Plan (TAMP)  
Andrew Williams – Ohio Department of Transportation

### Friday: 1:45-2:45 – 1.0 CPD Hours

#### Alternative Delivery

Southern Ohio Veteran's Memorial Highway – ODOT's First P3 and Largest Project  
Jonathan Hren, PE – ms consultants, inc.  
Chad Ratkovich – Portsmouth Joint Venture  
Tom Barnitz, PE – ODOT District 9

Innovative Procurement Methods to Accelerate and Manage the GDOT's Alternative Delivery Program  
Tim Matthews, PE – Georgia Department of Transportation  
Dustin T. O'Quinn, PE, DBIA – HNTB Corporation

#### Urban Transportation Projects

Lakefront West (Cleveland West Shoreway Improvements)  
Kirsten Bowen, PE – Michael Baker International  
Michelle Johnson – Environmental Design Group  
Timothy Sturges, PE – Ohio Department of Transportation, District 12

SUM-76-10.00 Main Broadway Interchange  
Scott Buchanan, PE – AECOM Technical Services, Inc.

#### Interstate & Interchange

Practical Design Implementation on Interstate 480  
Rob Chappelle, PE – Mott MacDonald  
Eric Kallio, PE - Ohio Department of Transportation, District 12

Columbus Crossroads  
Tom Hibbard, PE – ms consultants, inc.  
Thom Slack, PE – Ohio Department of Transportation, District 6

### Friday: 3:15-4:45 – 1.5 CPD Hours

#### Alternative Delivery

TDOT I-240 MemFix4 – Alternative Delivery Design Project  
Sammie McCoy, PE – Benesch

Delivering an ODOT Design-Build project  
Steve Schmidt – City of Columbus - Public Service  
Brian Davidson – Ohio Department of Transportation, District 6  
Justin Ginnetti – City of Columbus - Public Service

HAM-71-3.81 (IR-71 MLK Interchange Design Build)  
Jake Stremmel, PE – HDR Engineering, Inc.  
Mike Mann – City of Cincinnati  
Eric Kahlig, PE – Ohio Department of Transportation

#### Urban Transportation Projects

Circles on the Square- Mini-Roundabouts and Road Diets in the Central Business District  
Aaron Call, PE – OHM Advisors  
Nick Shultz, PE – City of Newark – Division of Engineering  
Brian Morehead, PE – City of Newark – City Engineer

CUY-87-4.24 Bridge Replacement Project  
Sean Milroy, PE – Michael Baker International  
Timothy Sturges, PE – Ohio Department of Transportation, District 12

Kent-East Summit Street - An example of Successful Partnering / Stakeholder Collaboration  
James Bowling, PE – City of Kent  
Michael Bruder – Kent State University  
Mike Woodring, PE – AECOM Technical Services, Inc.

#### Interstate & Interchange

New Jersey Turnpike Interchange 14a Improvements  
David Nemeth, PE – Gannett Fleming

Jane Byrne (Circle) Interchange, Chicago  
Chuck Stenzel – TranSystems  
Dan Manojlovski – AECOM Technical Services, Inc.

Diverging Diamond Interchange  
Amy L. Zimmerman, PE – DGL Consulting Engineers, LLC

### Saturday: 8:00-9:30 – 1.5 CPD Hours

#### Transportation Planning

Thrive 105/93-Creating Healthy, Equitable, and Sustainable Communities  
Bill Crowley, PE – AECOM Technical Services, Inc.  
Freddy L. Collier Jr. – Cleveland Planning Commission  
Ryan Bouma, RLA, LEED AP – AECOM Technical Services, Inc.

Thinking Outside the Box – Lessons Learned from the Akron Beltway Planning Study  
Lorie Feudner – Ohio Department of Transportation, District 4  
Mark Frossman, PE – GPD Group

Freight System Optimization  
Justin Maderia, PE – Arcadis U.S. Inc.  
Emil Liszniansky, PE – Envision  
Craig Hebebrand, PE – Arcadis U.S. Inc.

### Saturday: 10:00-11:30 – 1.5 CPD Hours

#### Infrastructure Technology

Smart Mobility Corridor Phase 1 – Communication Backbone for CAV Testing  
Shane Campbell, PE – Gannett Fleming

Preparing for Advanced Vehicle Technologies through Infrastructure  
Elina Zlotchenko – U.S. Department of Transportation

### Saturday: 1:00-2:30 – 1.5 CPD Hours

#### Transit

Strategic Miami Area Rapid Transit  
Alan Brick-Turin, PE – Gannett Fleming

Central Susquehanna Valley Transit (CSVT) Project  
Raymond Henney, PE – SAI Consulting Engineers, Inc.  
Bob Cane, II – Trumbull Corporation

Cleveland Multimodal Transportation Facility  
Nancy Lyon-Stadler, PE, PTOE – wsp  
Freddy L. Collier, Jr. – Cleveland Planning Commission  
Jennifer LeMasters Wirtz - wsp

## Technical Tour Summary

### Friday: 10:15 AM - 12:15 PM & 1:45 PM - 3:45 PM | Cost \$15 | 1.5 CPD Hours

#### Northeast Ohio Regional Sewer District - Southerly Treatment Plant Tours

Northeast Ohio Regional Sewer District (NEORS) serves 60 communities and over one million residents within the greater Cleveland area. Situated on 288 acres, Southerly Treatment Plant is the largest of NEORS's three wastewater plants, and one of the largest facilities of its kind in the country. The Southerly Treatment Plant serves more than 530,000 residents and uses a three-step process to treat an average flow of 120mgd up to a maximum capacity to 735mgd. The first-stage activated-sludge process is like those used at many other treatment plants around the world. The second-stage process uses specialized bacteria to remove ammonia and nitrogen, two compounds which deplete oxygen in receiving waters. As a final step, the flow passes through filters and is disinfected by a chlorination/dechlorination process from May to October. Join a guided walking tour by sewer district staff to learn more on this state of the art facility.

The tours will last approximately 1.5 hours. Appropriate dress is required, which includes casual clothing and closed-toe/heel, hard, solid sole shoes (no flip flops, crocs or high heeled shoes are allowed). A hard hat, safety glasses, and nitrile (rubber) gloves will be provided on site. Lunch will not be provided with tour. If interested in being provided lunch please see separate registration.

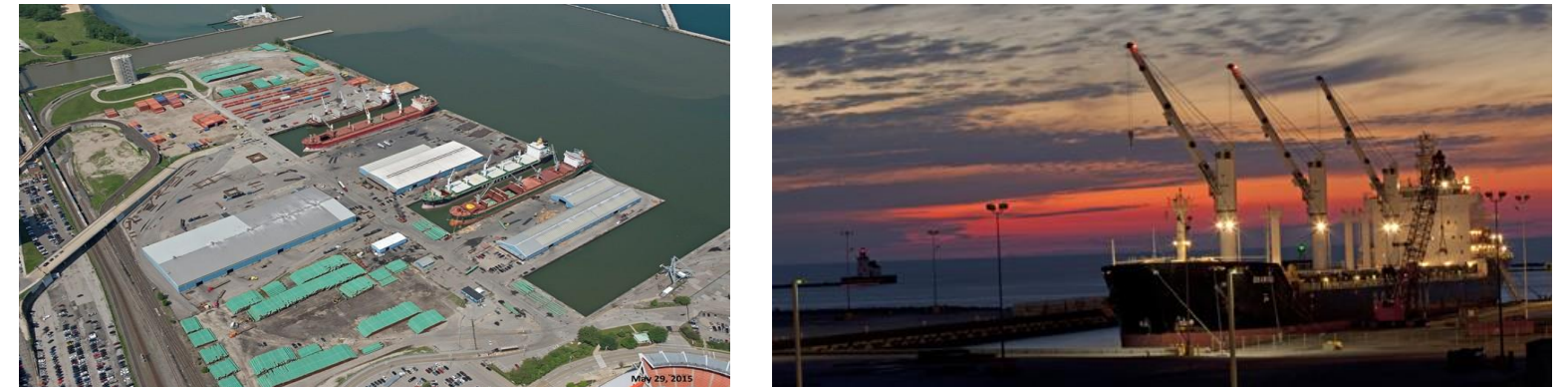


### Saturday: 8:30 AM - 10:30 AM | Cost \$15 | 1.5 CPD Hours

#### The Port of Cleveland Tour

The Port of Cleveland is one of the largest ports on the Great Lakes. Over 20,000 jobs and \$3.5 billion in annual economic activity are tied to the roughly 13 million tons of cargo that move through Cleveland Harbor each year. The Port of Cleveland is the first major U.S. port of call on the Great Lakes for ships transiting the St. Lawrence Seaway System and is the only local government agency whose sole mission is to spur job creation and economic vitality in Cuyahoga County. The technical tour will cover the 45-acre Cleveland Bulk Terminal which consists of an automated ship loader system that transfers 5,200 tons of iron ore per hour, a Class 1 railroad and docks that accommodate 1,000-foot vessels and the 80-acre general cargo operation with 3 mobile cranes with 60-ton capacity each; one stationary crane with 150-ton capacity; two Class 1 railroads; substantial lay-down areas, and inside storage capacity.

The tours will last approximately 1.5 hours. Appropriate dress is required, which includes casual clothing and closed-toe/heel, hard, solid sole shoes (no flip flops, crocs or high heeled shoes are allowed). Lunch will not be provided with tour. If interested in being provided lunch please see separate registration.

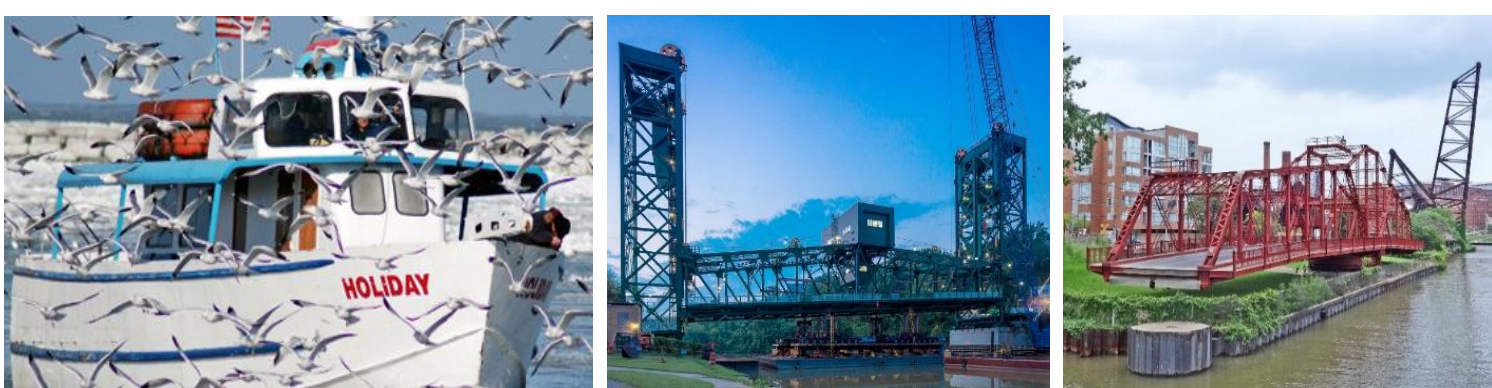


### Saturday: 8:00 AM - 11:00 AM & 1:30 PM - 4:30 PM | Cost \$25 | 2.0 CPD Hours

#### Cuyahoga River Boat Tours

Please join us for a boat tour of the Cuyahoga River in downtown Cleveland. The tour will traverse down the famed burning river and under many of Cleveland's iconic, diverse, and historic bridges. Speakers will share details of the various structures including the 1910's Veteran's Memorial Bridge, the 1900's Center Street Swing Bridge, the 2010's Columbus Lift Bridge, the 1930's Hope Memorial Bridge, and the new I-90 Innerbelt Bridges, among many others. Participants will learn about the history of this important waterway, the Flats district, shipping vessels, and Cleveland's industrial past and present and have access to unmatched views of the downtown skyline.

The tours will last approximately 2.5 hours. Appropriate dress is required, which includes casual clothing and closed-toe/heel, hard, solid sole shoes (no flip flops, crocs or high heeled shoes are allowed). Lunch will not be provided with tour. If interested in being provided lunch please see separate registration.



### Saturday: 1:00 PM - 4:00 PM | Cost \$15 | 1.5 CPD Hours

#### Veterans Memorial Bridge and Subway Station Tour

In 1918, the Veteran's Memorial Bridge was celebrated as the world's largest double-deck, reinforced concrete structure, and was also listed on the National Register of Historic Places in 1976. The Veteran's Memorial Bridge is 96 ft. tall and 3,112 ft. long, connecting Detroit and Superior Avenues over the Cuyahoga River Valley in downtown Cleveland. At the time of its completion the bridge was Cleveland's first high-level bridge over the Cuyahoga River and also the largest steel and concrete reinforced bridge in the world. The upper deck, opened to automobile traffic on Thanksgiving Day 1917, carried an average of 70,000 vehicles a day. The lower deck, opened on Christmas Day 1917, held four streetcar tracks. On the west side, streetcars entered and exited the bridge through tunnels beneath West 25th Street and Detroit Avenue. The subway served as a major hub for commuter transportation until the discontinuation of the service on January 24, 1954. The tour will take visitors down into the discontinued subway system with spectacular views of the Cleveland Skyline and the Cuyahoga River.

The tour will last approximately 2 hours. Appropriate dress is required, which includes casual clothing and closed-toe/heel, hard, solid sole shoes (no flip flops, crocs or high heeled shoes are allowed). Lunch will not be provided with tour. If interested in being provided lunch please see separate registration.

